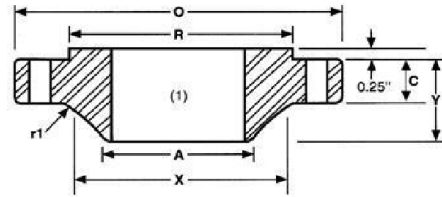
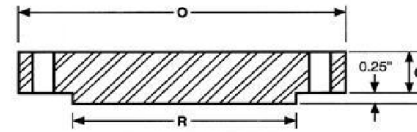


ANSI B16.47 Series A Class 600 Weld Neck and Blind Flanges



Weld Neck



Blind

Nominal Size	Outside Diameter O	Thickness of Flanges (2)		Length Thru Hub Y	Dia. Of Hub At Base X	Dia. Of Hub at welding Point A	Dia Of Raised Face R	Dia. Of Bolt Circle	No. Of Holes	Dia. of bolt Holes	Dia. Of Bolts	Fillet	Approx.	Approx.
		C	C									Radius Min r1	Weight (Lbs) WN	Weight (Lbs) Blind
26"	40.00	4.25	4.94	8.75	29.44	26	29.50	36.00	28	2.00	1 7/8	0.5	940	1759
28"	42.25	4.38	5.19	9.25	31.62	28	31.50	38.00	28	2.12	2	0.5	1060	2061
30"	44.50	4.50	5.50	9.75	33.94	30	33.75	40.25	28	2.12	2	0.5	1210	2423
32"	47.00	4.62	5.81	10.25	36.12	32	36.00	42.50	28	2.38	2 1/4	0.5	1375	2856
34"	49.00	4.75	6.06	10.62	38.31	34	38.00	44.50	28	2.38	2 1/4	0.56	1540	3237
36"	51.75	4.88	6.38	11.12	40.62	36	40.25	47.00	28	2.62	2 1/2	0.56	1705	3802
38"	50.00	6.00	6.12	10.00	40.25	38	41.50	45.75	28	2.38	2 1/4	0.56	1470	3404
40"	52.00	6.25	6.38	10.38	42.25	40	43.75	47.75	32	2.38	2 1/4	0.56	1630	3838
42"	55.25	6.62	6.75	11.00	44.38	42	46.00	50.50	28	2.62	2 1/2	0.56	2030	4585
44"	57.25	6.81	7.00	11.38	46.50	44	48.25	52.50	32	2.62	2 1/2	0.56	2160	5105
46"	59.50	7.06	7.31	11.81	48.62	46	50.25	54.75	32	2.62	2 1/2	0.56	2410	5758
48"	62.75	7.44	7.69	12.44	50.75	48	52.50	57.50	32	2.88	2 3/4	0.56	2855	6737
50"	65.75	7.75	8.00	12.94	52.88	50	54.50	60.00	28	3.12	3	0.56	3330	7695
52"	67.75	8.00	8.25	13.25	54.88	52	56.50	62.00	32	3.12	3	0.56	3560	8426
54"	70.00	8.25	8.56	13.75	57.00	54	58.75	64.25	32	3.12	3	0.56	3920	9333
56"	73.00	8.56	8.88	14.25	59.12	56	60.75	66.75	32	3.38	3 1/4	0.62	4280	10529
58"	75.00	8.75	9.12	14.56	61.12	58	63.00	68.75	32	3.38	3 1/4	0.62	4640	11414
60"	78.50	9.19	9.56	15.31	63.38	60	65.25	71.75	28	3.62	3 1/2	0.69	5000	13108

1. Bore diameter to be specified by the purchaser
2. When these flanges are required with flat face, either the full thickness or thickness with raised face removed may be furnished. User are reminded that removing the raised face will make length through hub non standard
3. This Standard Does Not Specify Slip-On Flanges. Please Call us For Your Requirement of Large Dia Forged Slip-On Flanges

Large Diameter Flanges Through 260" Can Be Furnished.

Sumitec Int'l, Inc

Phone (877)-837-9618 Fax (866) 311-5335 email:sumitecsales@comcast.net